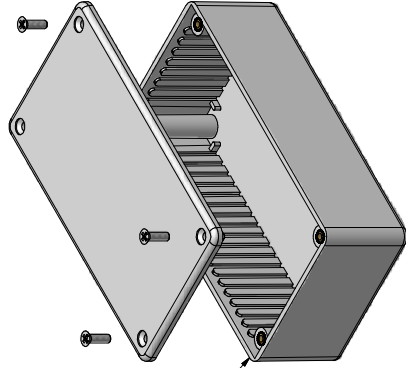


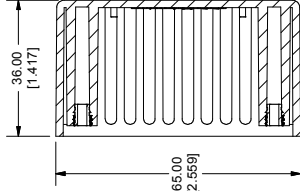
1591C ENCLOSURE

LID FASTENERS
M3 x 10 mm Screws for FRABS/Polycarb
#4 x 1/2" Self Tapping for GPABS

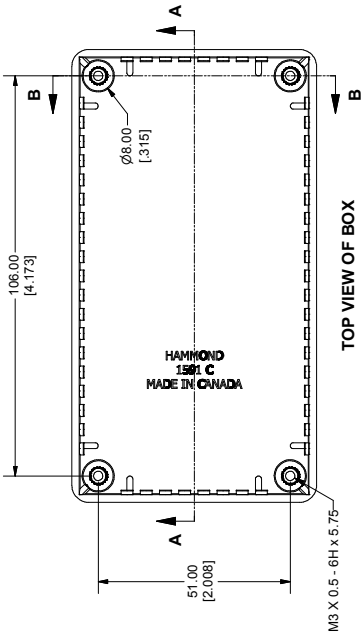


Brass inserts in FRABS and Polycarb -
No inserts in GPABS

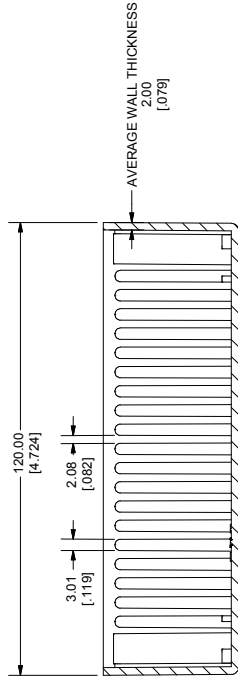
EXPLODED VIEW OF ENCLOSURE



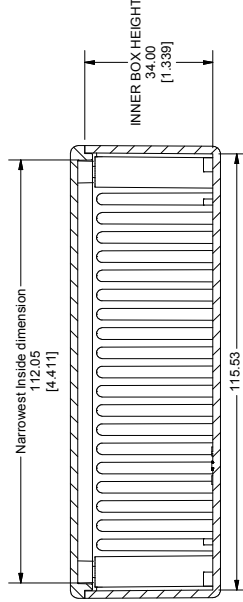
SECTION B-B



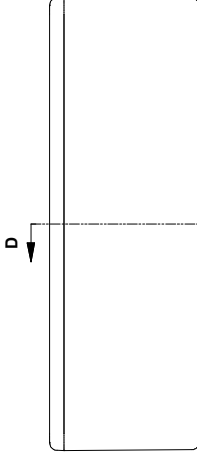
SIDE VIEW OF BOX



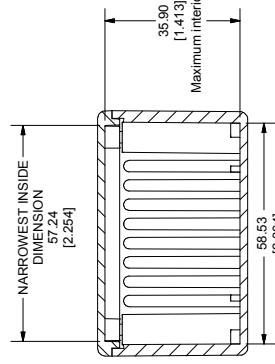
SECTION A-A



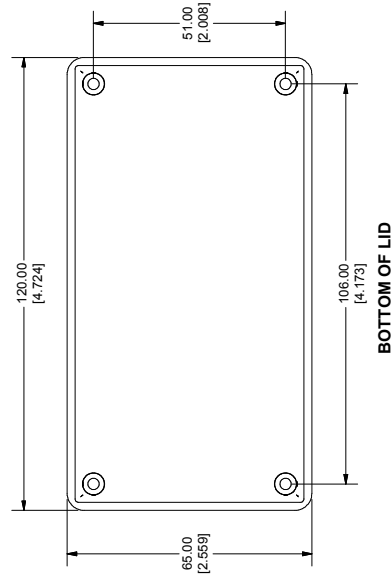
SECTION C-C



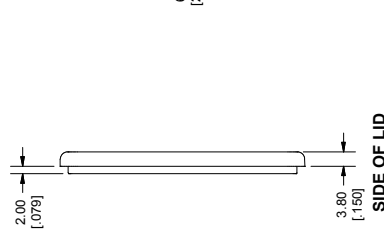
END VIEW OF ASSEMBLY



SECTION D-D



BOTTOM OF LID



SIDE OF LID

PART NUMBERS

1591C Enclosures	
Material	Part Number
FR ABS	1591CBK
UL94 - V0	1591CGY
GP ABS	1591CBK (Conductive Paint)
	1591CSBK
	1591CSGY
Translucent	1591CTBU
Polycarbonate	1591CTRD
	1591CTOL
Accessories	
Description	Part Number
PC Board Card Adapters	See Accessories
Flange Kits	See Accessories
Clear Lids - clear, flame retardant polycarbonate - Lid ONLY	1591CC
FR ABS & Polycarbonate Replacement Screws - Flat head Phillips, Nickel Plated Pkg of 100	1591TMS100
GP ABS Self Tapping Pkg of 100	1591TS100
	1591TS100BK (Black)
	1591TS100BK (Black)
Required Torque on Fasteners (no lubrication)	
M3 - 0.5 x 10mm Screws	30-40 cN·m
#4 x 0.5" Screws	30-40 cN·m

Note:
Enclosures can be Factory Modified (Milling, Drilling, Printing etc.)
Solid models of this enclosure available in STEP or IGES Format.
Contact Factory mjm@hammondmg.com

